



# Corvallis MLK Chess Tournament

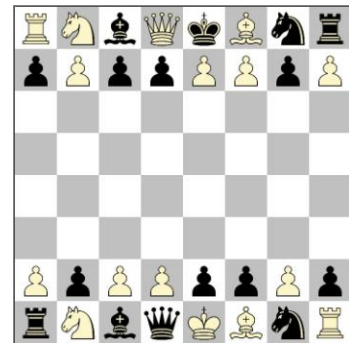
January 16, 2012

Zion Lutheran School, Corvallis

An OSCF Championship Qualifier Tournament

Celebrate MLK Day and enjoy great chess and camaraderie at Zion Lutheran School in Corvallis. All players in grades K-12 are welcome. Players will be divided into several playing sections based on age and experience, so players of all skill levels will have suitable competition.

SCHEDULE: Check-in 9:00-10:00 AM (9:00-9:25 for Power section); Players meeting 10:00 AM; Games 10:30 AM (9:30 for Power section). Five rounds for all players. No one is eliminated. 30 minute lunch break after 2nd round (after 3rd round for High-Energy section). Awards at approximately 2:30 for High-Energy section, 3:30 for Good Knights, 4:30 for Mighty Rooks and 5:30 for Power section.



REGISTRATION: Deadline is Saturday, Jan. 14. Register online now at [www.oscf.org](http://www.oscf.org) (preferred), or contact Dan Dalthorp at [onco111@yahoo.com](mailto:onco111@yahoo.com) or (541)791-4939. NOTE: USCF membership is required for the Mighty Rook and Power sections. If you are playing in one of these sections, be sure your membership is current or renew/join on site. Entry fee is \$15.

USCF MEMBERSHIP (Mighty Rook and Power sections only): Players in the Mighty Rook and Power sections must be USCF members. Cost to renew/join USCF for one year is approximately \$20, depending on age and membership options. Alternatively, a "Trial Membership" that is valid for three months may be purchased on-site for \$8 (or \$10 for ages 13-24, \$15 for ages 25+). There is no USCF membership requirement for players in the High-Energy and Good Knight sections.

## SECTIONS

**High-Energy Section:** NWSRS rating < 700 (or unr. grades K-6). 5 rnds, G/25 min.

**Good Knight Section:** NWSRS rating 700-999 (or unr. grades 7-9). 5 rnds, G/30.

**Mighty Rook Section:** NWSRS rating 1000-1499 (or unr. grades 10-12). 5 rnds,

**Power Section:** Players with NWSRS or USCF rating 1500+ play in the Power Section, but lower rated players are also welcome. 5 rounds, G/45.

High-Energy and Good Knight sections are NWSRS rated. Mighty Rook and Power sections are NWSRS/USCF dual-rated. USCF membership required for the Mighty Rook and Power sections (join/renew on-line or on-site).

## AWARDS:

**A. High-Energy, Good Knight, and Mighty Rook sections:** Trophies for top four finishers in each section. Head-to-head Blitz (G/5) playoffs will be used to break ties. There will also be awards for "Best Notation", "Best Handshake", and "Good Sportsmanship" in each section. In addition, event souvenirs will be awarded to all players.

**B. Power section.** Cash awards. \$150 for first; \$90 for second; \$60 for third. \$50 for top U1700. No tie-breaks. In case of tie, prizes will be split evenly among those tied. Awards are based on turnout of 25 in the section. If fewer participate, prizes will be reduced proportionally but in no case will prizes be less than \$100-60-40 for 1st-3rd and \$35 for top U1700.

## DETAILS:

1) The tournament is an OSCF state championship QUALIFIER. By playing in two qualifier events and earning an established rating (minimum of 15 NWSRS rated games or 25 USCF rated games), a player is eligible to play in the OSCF State Championship tournament in Seaside, Oregon in April. Visit [oscf.org](http://oscf.org) for details.

2) All games will be NWSRS rated (Mighty Rook and Power section games will be USCF/NWSRS dual-rated). A rating is an objective--but not super accurate--measure of playing strength. If you don't already have a rating, you will earn one at this event! As you improve, you can watch your rating increase.

3) Since Mighty Rook and Power Section games will be USCF rated, USCF MEMBERSHIP is required for players playing in these two sections. Memberships may be renewed or purchased on-site.

3) NOTATION is required in the Mighty Rook and Power Section and encouraged in the Good Knight section.

4) CLOCKS are required in the Power section and Mighty Rook section. If a clock is not used at the start of a game, a tournament director will place a clock on a game that threatens to exceed the time limit (after 30 minutes for Novice section, 40 minutes for Intermediate section, 60 minutes for Advanced section). Typically, after a clock is placed on a game, each player will have 10 minutes to complete his or her remaining moves. Players in the High-Energy and Good Knight sections may use their own clocks for the entire game if both players wish to use a clock. In all sections, TD may place a clock at any point in the game to ensure fair and equitable allocation of time between the players.

5) Chess sets will be supplied; Bring a clock if you have one.

6) HELP: If you are new to tournament play and these terms are confusing, you can learn more at [www.oscf.org](http://www.oscf.org), or email your questions to [onco111@yahoo.com](mailto:onco111@yahoo.com), or just ignore the details and enjoy the games. The basic essentials will be reviewed and explained prior to the first round.

7) Official USCF rules of play apply in all sections.

8) Adult supervision required for children under the age of 12.

9) There will be a concession stand lunch food and snacks.

**Contact:** Dan Dalthorp

**Email:** [onco111@yahoo.com](mailto:onco111@yahoo.com)

**Phone:** 541-791-4939

**Location Details:**

Zion Lutheran School

2800 NW Tyler Ave

Corvallis OR 97330 US